



A BRIEF HISTORY OF METAL SYRUP CANS

Dr. Matthew M. Thomas

2023 INTERNATIONAL
MAPLE CONFERENCE



Metal Syrup Cans Since 1870s

I HAVE GOT ON HAND A FEW
Dozen Gallons of
HERMETICALLY SEALED CANS
—OF—
MAPLE SYRUP

Some of which is VERY NICE and some that I
should not wish to call very nice.

PRICES TO SUIT QUALITIES.

C. F. SWETT,
Manchester, Vt., July 28, 1873.

1873 Manchester Journal

L. & J. A. STEWARD,
Manufacturers of all kinds of
**Tin, Copper and Sheet-
Iron Ware,**
Sap Buckets, Pans, Pails and Heaters
Made from the very best tin at short notice.
— ALSO —
SUGAR PAILS, SYRUP CANS, &C
TIN ROOFING AND SPOUTING AT REA-
SONABLE PRICES.
EAST CLARENDON, VT.
Having purchased our stock before the re-
cent advance we can give our customers bet-
ter prices than parties who purchased their
stock at the present market rates. Persons in
want of anything in our line would do well to
examine our goods and prices before purchas-
ing. feb19w6w&ev8at

1880 Rutland Weekly Herald

—1887.—
**IMPROVED FULL GALLON
Square Syrup Can**
With one and one-fourth inch Low Packed Can Screw that cannot
leak. Ring on top to handle can by. Side Panelled so that it
cannot bulge out when full. Will pack close, making a
saving to shippers.
EVERY CAN TESTED BY STEAM
And warranted not to leak.
PRICE LIST.
Full Gallon Cans delivered on cars, tied up in bundles of 25 cans at 12c. each.
I can also furnish them in cases ready for shipment at the following prices:
Cases of 12 Cans, - - - \$1.69 Case of 6 Cans, - - - .57
" 9 " " " 1.25 Delivered on cars.
I have added to my stock a new
ONE-HALF GALLON SQUARE CAN
At the following prices:
One-half Gallon Square Cans delivered on cars at 10c each. The
same furnished in cases of 12 cans at \$1.35; Case of 9 cans at \$1.05;
delivered on cars.
CASH WITH ALL ORDERS.
10, 28 and 50 lb. Sugar Pails,
SAP TUBS, SAP SPOUTS, SAP PAILS, SAP NAILS,
SKIMMERS,
Pease's Tin Sap Bucket Separators.
GEO. W. TILLOTSON,
NORTHFIELD, VT.

1887 Northfield News

SYRUP CANS!

With new and improved machinery which great-
ly facilitates the manufacture of square and round
syrup cans (consequently reducing the cost) I pro-
pose to give the public the benefit by selling cans
and pails for cash at the following prices:

1 Gall. Standard Square Cans,	10 Cts.
1-2 " " " " "	09 "
1 " " Round " "	10 "
5 " " " " "	35 "
10 Pound Pails with Balls,	10 "
10 " " " no Balls,	09 "
28 " " " " "	18 "

These cans and pails are of the quality I have
always made and I guarantee them equal to any
there are in the market.

JOHN CALVIN,
53 MAIN ST., - BRATTLEBORO.

1890 Vermont Phoenix

Can Makers and Local Tin Smiths

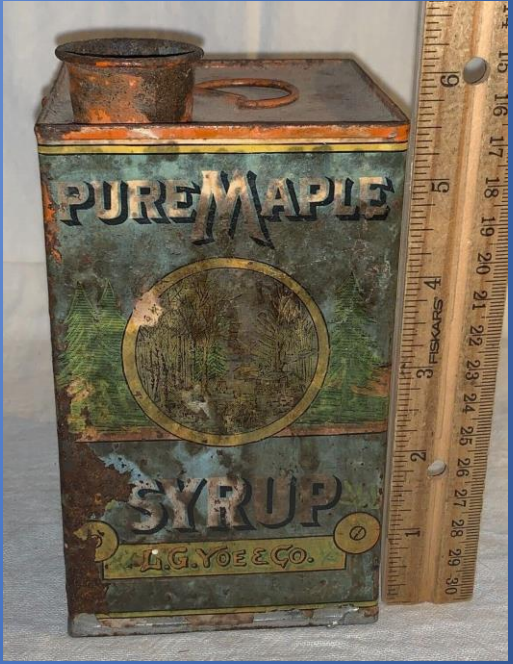
Square or Rectangular and Round
Quart to Gallon to Five Gallon
Corked at First - Screw Cans early 1890s



Early Painted Cans
Round
and
Rectangular

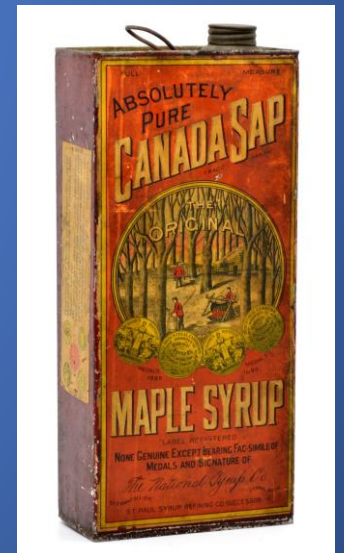
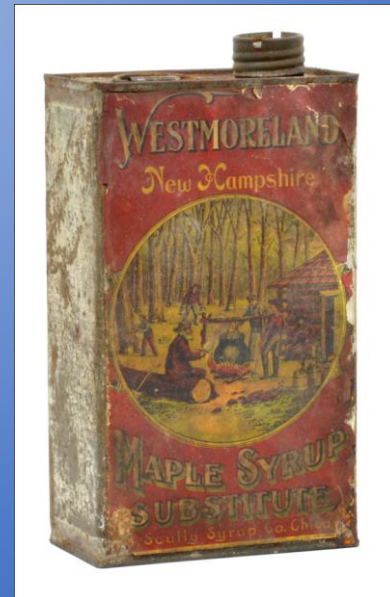
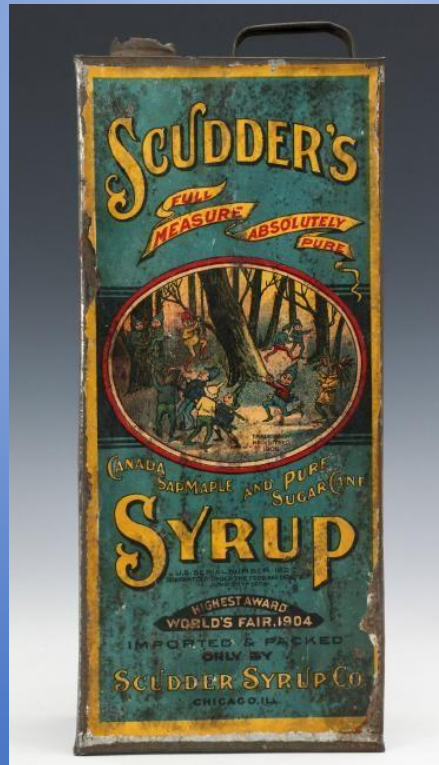
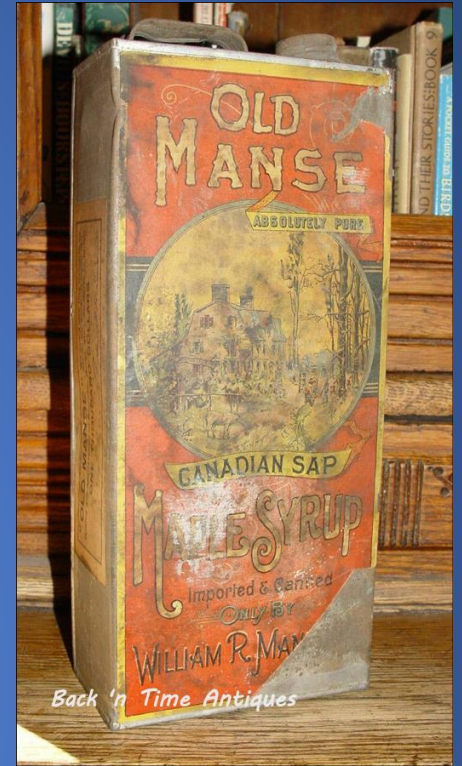
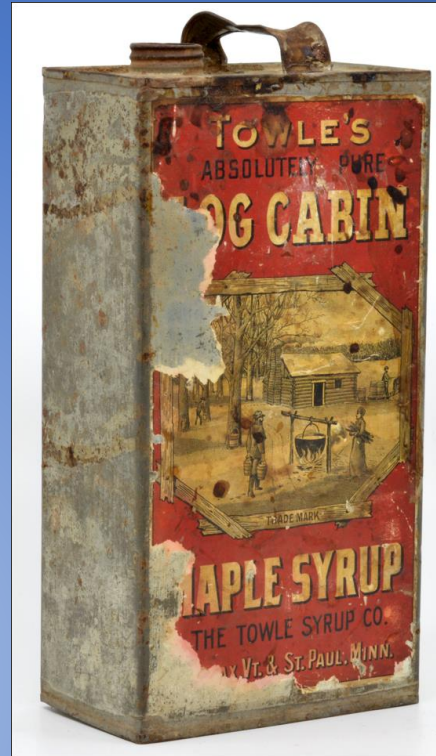


Wrap- Around Full Color Labels



Color Paper Labels

Packers and Blenders with Urban Markets



WELCH BRO'S MAPLE CO., CANNERS AND DEALERS IN

Once tried always wanted. Pure Maple Syrup and Sugar



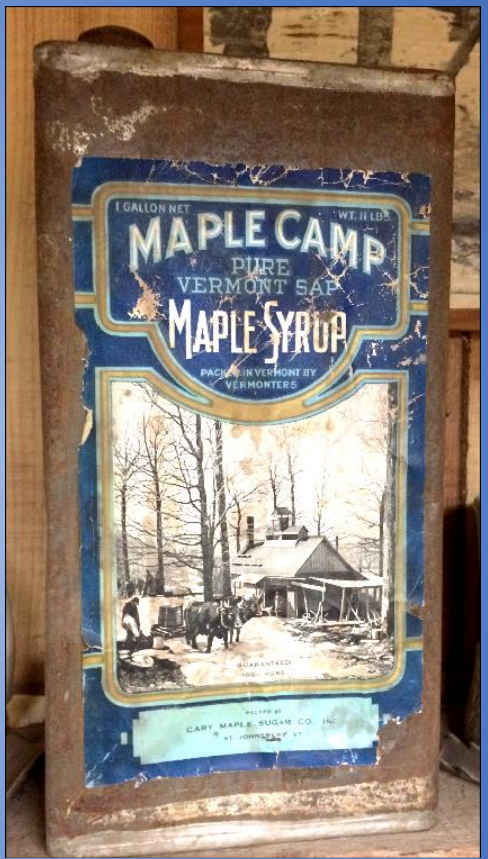
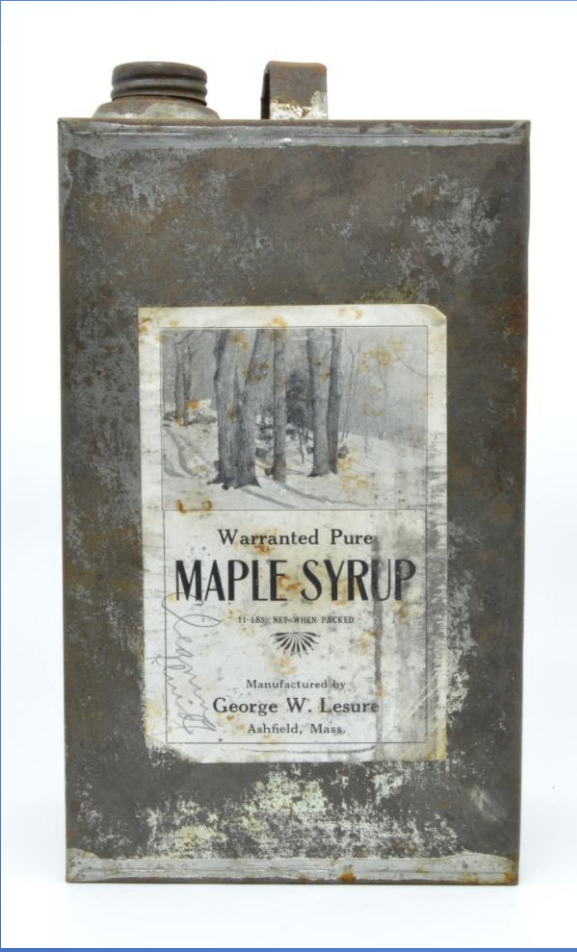
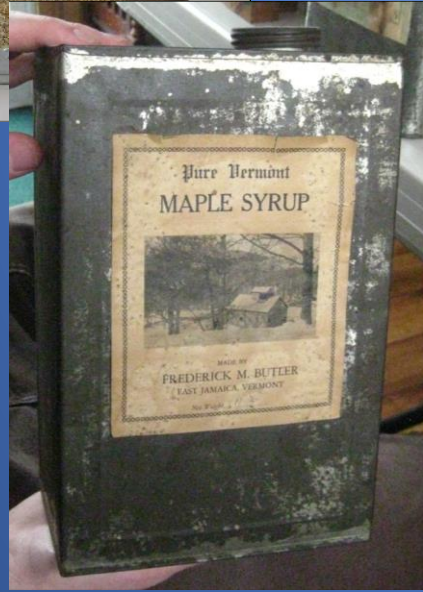
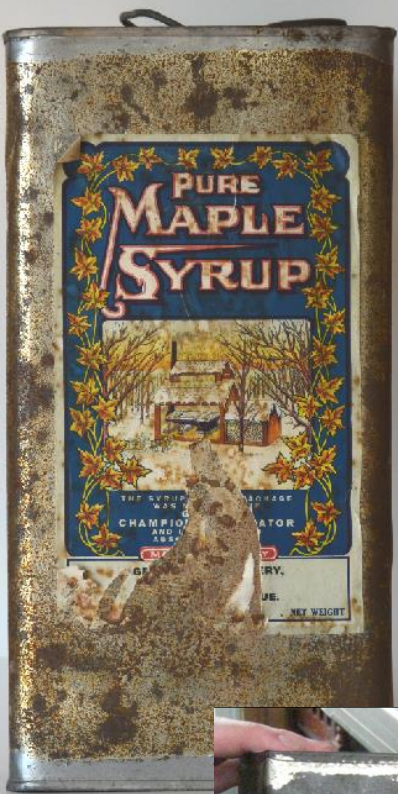
Packed in 1 gal., ½ gal., ¼ gal., and quart and pint bottles, all hermetically sealed, and guaranteed against swells.

Ask your grocers for **WELCH BRO'S Syrup and Sugar,**

If he cannot supply you write to us direct, **Burlington, Vt.**

WELCH BRO'S MAPLE CO.,

Simple Paper Label on Front of Can



Don't Wait
 till you want to use them before ordering your Syrup labels. You can not sell syrup or sugar without a label—you subject yourself to a heavy fine if you do. The following is a sample of label we get out, and can be used on either a syrup can or sugar pail. We print them to read just "Syrup" if you wish.

**STRICTLY PURE
 VERMONT
 MAPLE SUGAR**

Made and put up by
**D. R. HOLMES & SON
 WINDSOR, VT.**

We do not use gummed paper for our labels because they will not adhere to tin or glass for any length of time; they also frequently become stuck together by the action of atmospheric moisture. Our labels stick firmly by the use of clear paste, after the label is on, an even coating of paste on the face of the label will help to attach the label firmly. When available, varnish used in the place of paste will attach the labels firmly to tin.

PRICES: PURE LABELS:
 100, 50c. 250, \$1.00. 500, \$1.25. All Postpaid.
 Cash to invariably accompany orders.

Mail Orders for all kinds of Printing receive Prompt Attention
COURIER PRESS, Swanton

1910 Swanton Courier

Maple Sugar and Syrup Labels

NEW---Improved in Shape and Size
PRINTED IN TWO COLORS

BORDER AND MAPLE LEAF (not shown) PRINTED IN SECOND COLOR

<small>NET CONTENTS</small>	<small>LBS.</small>
Pure Vermont	
MAPLE SYRUP	
<small>FROM THE SUGAR CAMP OF</small>	
C. B. Brown & Son	
<small>Residence: Westmore, Vt.</small>	
<small>P. O. ADDRESS ORLEANS R. F. D. 2</small>	
<small>All Maple Goods made at this Camp Guaranteed Absolutely PURE and UN- ADULTERATED.</small>	

We make them read "Sugar" or "Syrup" or some of each. Net weight or contents line also changed.

LAW NOW REQUIRES WEIGHT OR CONTENT STATEMENT

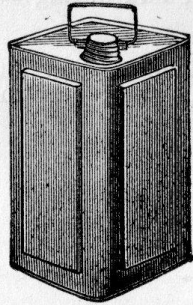
We solicit other printing for sugar makers and dairymen. Price lists of sugar in different sized packages and of dairy products bring business as several farmers for whom we have done printing can testify.

Gilpin, Hunt Co., Inc.
NEWPORT and BARTON

1933 Palladium and News

Syrup Cans.

With Screw Top, either Square or Round.

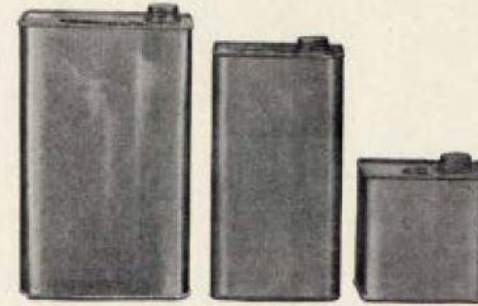


After the sugar maker has been to the expense and care of producing fine flavored syrup he should put it up in tin cans and label each one with his name and address. If the product be of a fine quality the label will be a good advertisement and bring him many customers.

Our cans are all carefully tested before shipment and are put up in crates of 100 cans each.

Prices of Cans Quoted on Application.

Petits Bidons a Sirop



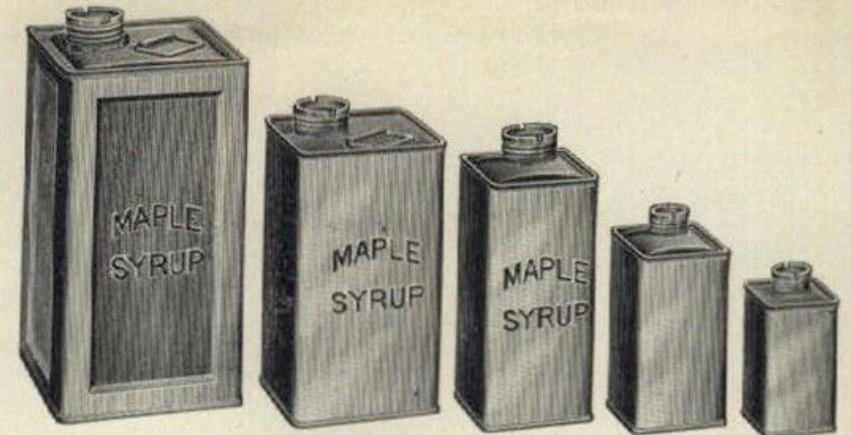
On fabrique toute grandeurs de bidons, soit sur mesure a vin ou mesure impériale, de bon fer-blanc de forme oblongue, tel que représenté par la gravure ci-contre, avec cap en vis sur base en fer-blanc. Cette forme est la plus belle, et les commerçants la préfère, comme étant la plus commode pour emballer dans des boîtes. Les bidons de cette forme sont moins sujets à crever, et à couler. Tous nos bidons sont mis à l'épreuve avant de quitter nos ateliers. Pour l'expédition nous les mettons en caisse d'un cent; pour moins d'un cent, nous exigeons 25c pour la caisse.

Nous avons aussi en mains des boîtes contenant six canistres d'un gallon chaque, ou 12 canistres ou bidons, d'un demi gallon, et 24 bidons, d'une pinte chaque. Prix 20c chaque.

Early Cans Had Smooth Sides

Rectangular Panels for Strength -1890s

“Maple Syrup” Embossing – early 1900s

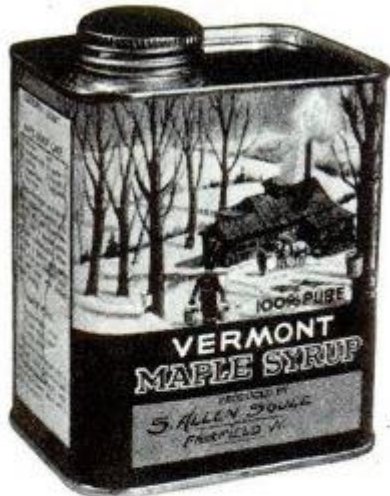


$1\frac{3}{4}$ in. Slotted Screws
Oblong Cans

Lithographed Syrup Cans

Introduced in 1947
S. Allen Soule

To Remind You of Vermont



PURE VERMONT MAPLE SYRUP

Direct from My Orchard
To Your Table

Price postpaid, east of Mississippi River

One Quart\$3.00

West of Mississippi, add 25 cents
(Deliveries in the United States only)

Send personal check or money order to

S. Allen Soule
Box 29, Fairfield, Vermont

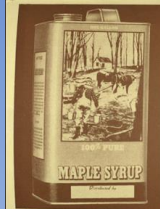


HOW TO INCREASE SALES At Low Cost When PACKAGING MAPLE SYRUP

Last year proved it again! You can sell Vermont Maple Syrup **FASTER** at **BETTER PRICES** when it is packaged attractively. This is not just my opinion alone. I can give you names of scores of maple producers, store keepers and stand operators who repeatedly tell or write me: "Your colorful, illustrated cans really *sell* maple syrup."

Get the COMPLETE Maple PACKAGING MATERIAL From Me—Bye-appeal isn't confined to the Maple Syrup container alone—it's the whole package that counts: the shipping label and sealing tape should be pleasing, too. Let me furnish you with smart, colorful cans, strong shipping cartons, shipping labels, gummed tape, rubber stamps, bright labels and glass containers, *absolutely everything you need*, in any quantity you desire. If you tried to produce such material, of similar quality, your costs would be prohibitive. Because I buy these items in quantity you gain. From me you are able to get an outstanding fast-moving, *complete* package—at a cost within reason. Order your material now. Convenient order blank is enclosed, or simply write your needs.

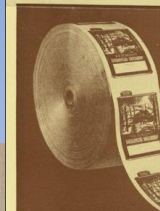
Attractive, colorful packaging is *selling* California prunes, Massachusetts frozen fish, Wisconsin cheese, Pennsylvania turkey, Louisiana yams and Texas walnuts. Vermont maple producers and dealers have found this the truth. That's why they ordered more than 125 thousand colorful lithographed Maple Cans from me last year!



VERMONT CANS	Each	100— per case
14 oz. 7 1/2	\$ 1.16	116
Quart 20	18	180
1/2 Gal. 25	22	220
1 Gallon 30	26	260

Blue ALL-STATE CANS (same prices as Vt. Cans) Superior scene illustration in blue, yellow. Recipes included. No state designation. Usable anywhere. Popular.

*Vt. N. H. syrup sales write me for information about my new New Hampshire illustrated can, 4 colors, done in production.

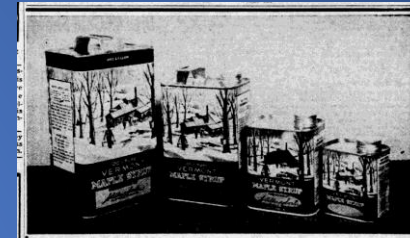


PLAIN CANS	Less than highest quality tin	Case Lots
Pints 8 1/2	\$ 1.18	100 per hundred
Quarts 10	13	120 per hundred
1/2 Gallon 15	18	180 per hundred
Gallons 21	20.00	200 per hundred

Write for special prices on larger quantities.



Order These Attractive Maple Packaging Materials • Get Better Profits



Mr. MAPLE PRODUCER To Sell MORE Syrup—At BETTER Prices Get My Popular LITHOGRAPHED CANS

HERE'S THE PROOF Last year Vermont Maple producers bought more than 125,000 of my attractive, 5-color lithographed maple cans. Their many repeat orders prove that Maple Syrup really SELLS in my appealing package. Scores of maple producers, dealers and stand operators, whose names I can give you, praise my cans. They say "Your colorful, lithographed cans really SELL my maple syrup!"

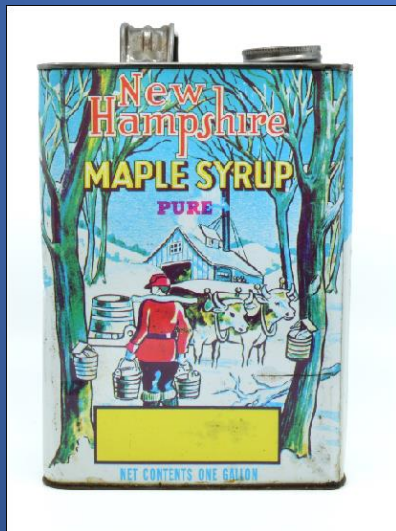
Get the COMPLETE PACKAGING MATERIAL From Me—Bye-appeal isn't confined to the maple syrup container alone—it's the whole package that counts: the shipping cartons, labels and sealing tape should be attractive. To meet the demand my 1948 line includes several new offerings—one of them the 14 oz. syrup can. Another addition, due April 1st, is a beautiful lithographed 5-color picture, mounting case and backing material. A new item, fast-moving package, at a price within reason. Order from the list below TODAY.

SYRUP CANS, Illustrated: The most attractive Maple Syrup Cans available anywhere. Excellent authentic maple scenes and recipes lithographed in appealing colors. 14" Senior appearing scene Vermont Cans for use with Vermont Syrup. 14" Senior appearing scene "Blue Can" for use with Vermont Syrup. Both cans available in all sizes.	EACH 14 oz. 11c Quarts 20c 1/2 Gallons 25c Gallons 30c	100 or More 16c each 18c each 23c each 26c each
SYRUP CANS, Plain high quality Tin	Less than case Pints 10c Quarts 13c 1/2 Gallons 19c Gallons 21c	Case lots 10c hundred 12.00 hundred 18.00 hundred 20.00 hundred
SHIPPING CARTONS (colored) Sturdy heavy corrugated cardboard. Clear fitting, require no other packing.	EACH 14 oz. 6c Quart 8c 1/2 Gallon 10c Gallon 12c	100 or More 5c each 6c each 8c each 10c each
RUBBER STAMPS 1 or 2 line Inkless Stamp. Pad. Ink. Use many times. Special ink won't run off or fade. When ordering specify: INKLESS PRINTING or PRINTING and include return.		Complete set \$3.75
SET OF 3 STAMPS (Vermont Grade Fancy, A, B)		Complete set \$3.50
STAMP OF YEAR (1950)		\$1.00 ea.
SHIPPING LABELS Decorative, maple scene illustrated in 2 colors, perforated gummed strip.		1c each
SEALING TAPE, Illustrated: Continuous Scotch Illustrations (3 1/2" high) of can. Complete attractive packages. Gummed 2" width— Plain, 2" width Plain, 2 1/2" width Plain, 3" width	LARGE ROLL 300 ft. roll 100 ft. roll 50 ft. roll	\$3.50 each \$1.25 each \$1.50 each \$1.75 each
FAYLOR INSTRUMENTS No. 2053 Adjustable Scale Thermometers, postpaid No. 2084 Vermont Syrup Hydrometers No. 2088 Sap Hydrometers		\$4.50 each \$1.25 each \$1.25 each
AYRES HYDROTHERM , combination hydrometer—thermometer		\$7.50 each
AYRES PRESSURE FILTER (Saves 2 1/2 hrs. per sugar day)		\$18.00 each

Free Illustrated Folder Available Terms: CASH with order, send check or M. O.
S. ALLEN SOULE
BOX 400, FAIRFIELD, VERMONT
Conveniently Located Dealers

BETHEL Graham Hardware Co.	Montgomery Center W. H. Chaffee & Son	ST. ALBANS Pelkey's Hardware Co.
BURLINGTON Leader Exporter Co.	RANDOLPH ESSEX JCT. J. H. Lamson & Son	VERGENNES Clark's Hardware
		WALPOLE, N. H. R. M. Johnson

Producers' Association Cans and Cans unique to Specific States



Generic Cans and State Series Cans



DISTRIBUTORS IN ALL MAPLE PRODUCING AREAS

Three designs available with Vermont, New York and All-State imprint.

Cans available in all sizes – Half-Pint, Pint, Quart, Two-quart and Gallon.

All containers packed in corrugated cartons, caps and inner-seals in each carton.

Decorated Sugar Tins for Maple Available: Round containers for Candy, Cookies, Cake in all diameters and heights for your needs.

Let Empire Can Corporation assist you in effecting your own private design. From your present labels or sketches we can offer our services and experience.

Please write or call for information.

Design #1.

Design #3.

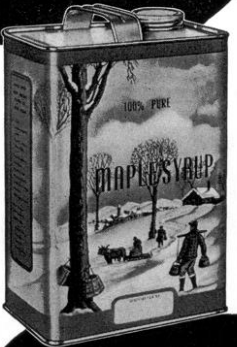
Design #4.

Empire Can Corporation
 220-28 ASHFORD STREET
 BROOKLYN, NEW YORK 11207
 Tel. 212-277-4701

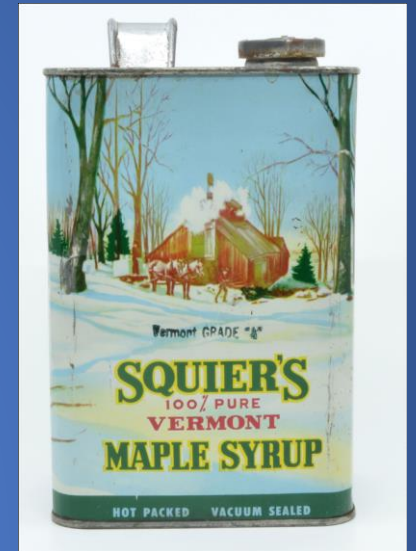
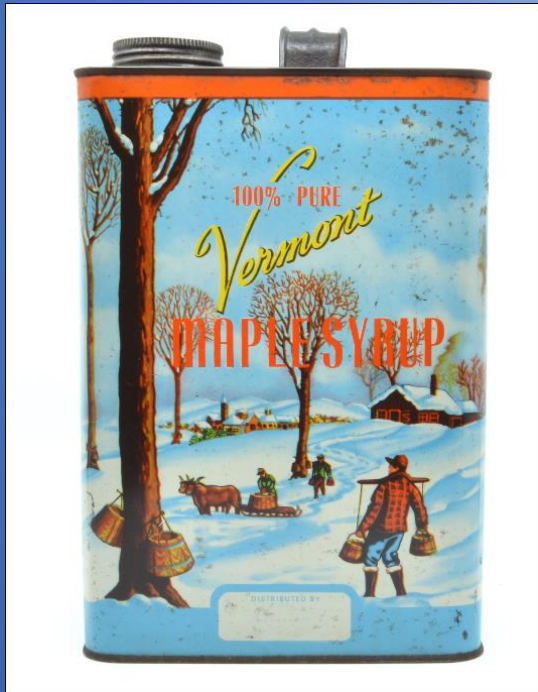


Golden Age of Color Lithographed Tins 1950s through the 1990s

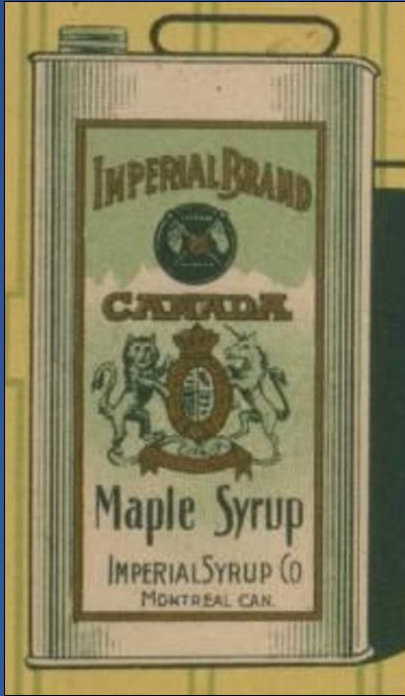
STERN
A GOOD CAN NAME
SINCE 1901



STERN CAN COMPANY, INC.
71 LOCUST STREET
BOSTON 25, MASS.
Telephone COlumbia 5-4460

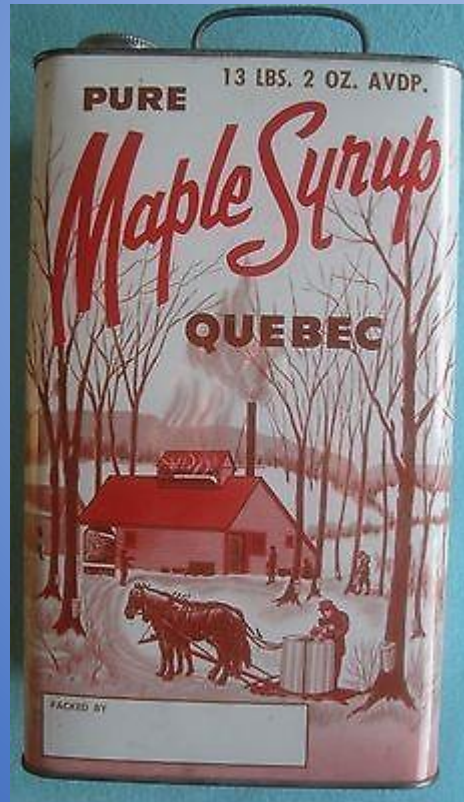
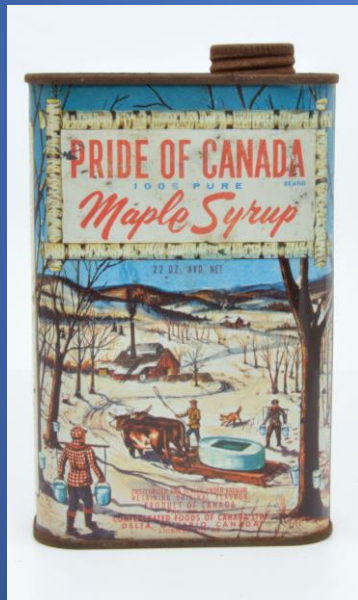


Canadian Syrup Can History Similar to United States

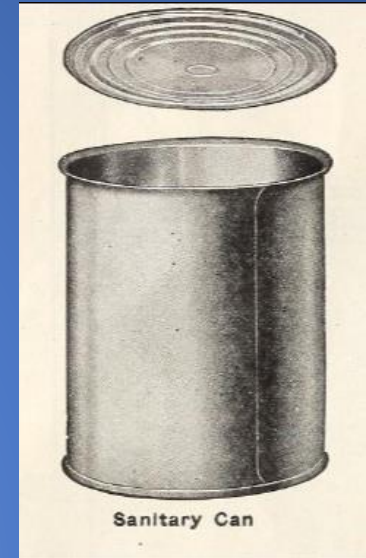


Canadian Lithographed Tins

Proprietary – Provincial - Generic



26 oz. Quebec Round Can
Introduced 1952
Ministry of Agriculture and
Citadelle Cooperative



AUX PRODUCTEURS DE SIROP D'ÉRABLE

Une nouvelle boîte à sirop d'érable destinée à remplacer le bidon d'un gallon est actuellement sur le marché et à la disposition des fabricants de sirop d'érable, qui veulent maintenir les prix de leur produit et contribuer au développement du marché local.



Boîte sanitaire no 2 lithographiée.
Contient 26 onces de sirop.
Conserve au sirop sa saveur du printemps.
Pas d'étiquette à poser.
(Sauf celle indiquant la qualité).
S'emballage rapidement et conserve le sirop indéfiniment.

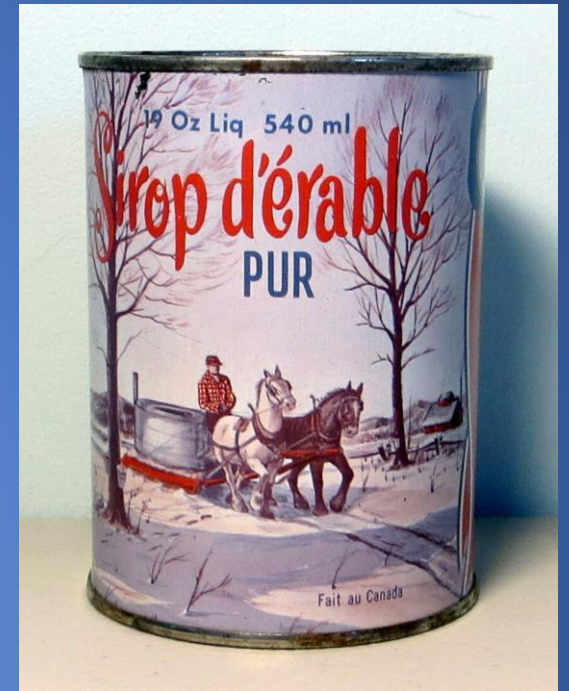
PRIX
\$11.00 le carton de 210 boîtes.
(Transport à la charge de l'acheteur).

Un espace approprié est réservé pour y apposer le nom et l'adresse du fabricant et comme la surface est glacée, il faut une encre spéciale. Nous pouvons vous fournir une estampe à votre nom et adresse, une bouteille d'encre spéciale et un tampon pour y mettre l'encre.

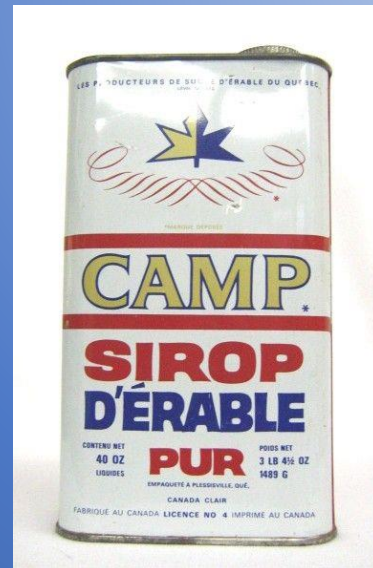
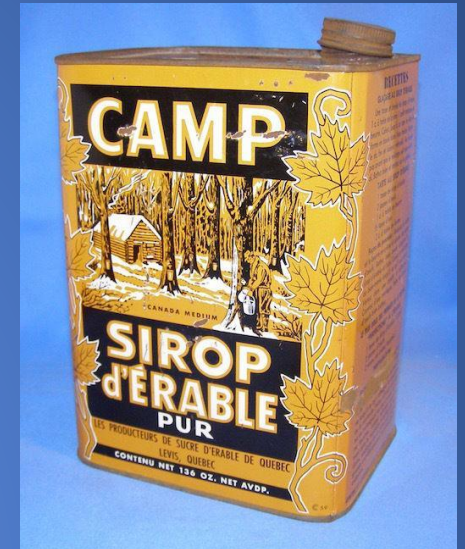
Le tout \$3.20 (taxe incluse)

LES PRODUCTEURS DE SUCRE D'ÉRABLE DE QUÉBEC
Edifice Desjardins, Lévis, Qué.

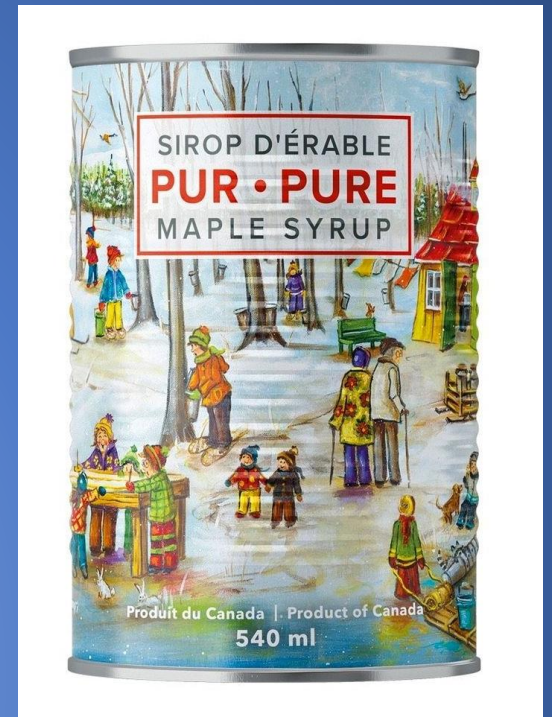




Les Producteurs de Sucre D'érable du Québec AKA – The Cooperative Citadelle and Camp Brands



Old Traditions Persist New Designs Introduced



Contact Information



Dr. Matthew M. Thomas

www.maplesyruphistory.com

maplematt@hotmail.com